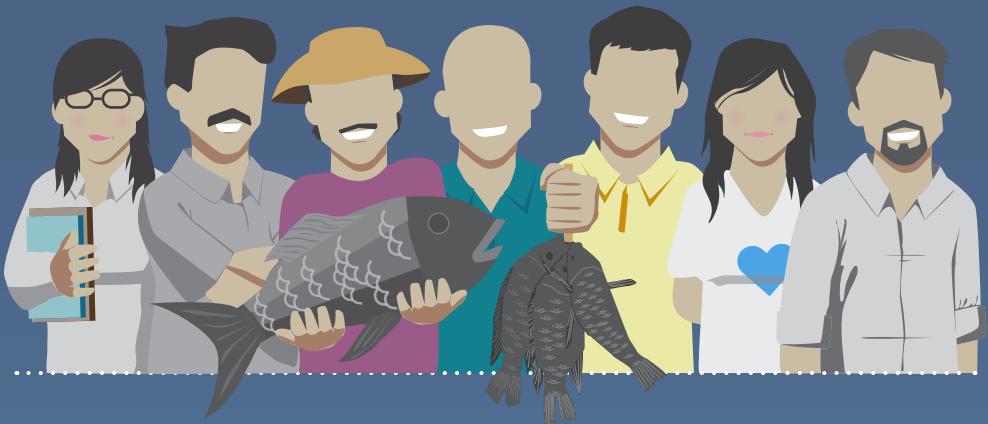


# Fisheries Management Area Scientific Advisory Group (SAG)

The SAG shall be established by the Management Body among the scientists and experts from:

BFAR-NSAP/  
RFO      Local  
Government  
Units (LGUs)      Municipal  
fishing sector      Aquaculture      Commercial  
fishing sector      Non-Government  
Organizations  
(NGOs)      Academic  
Institutions



## Roles of the SAG:



Recommends  
Reference  
Points for key  
species



Recommends  
Harvest Control  
Rules and Harvest  
Control  
Measures based on  
Reference Points



Vets Reference Points  
provided by National  
Stock Assessment  
Program

## Other functions may include:

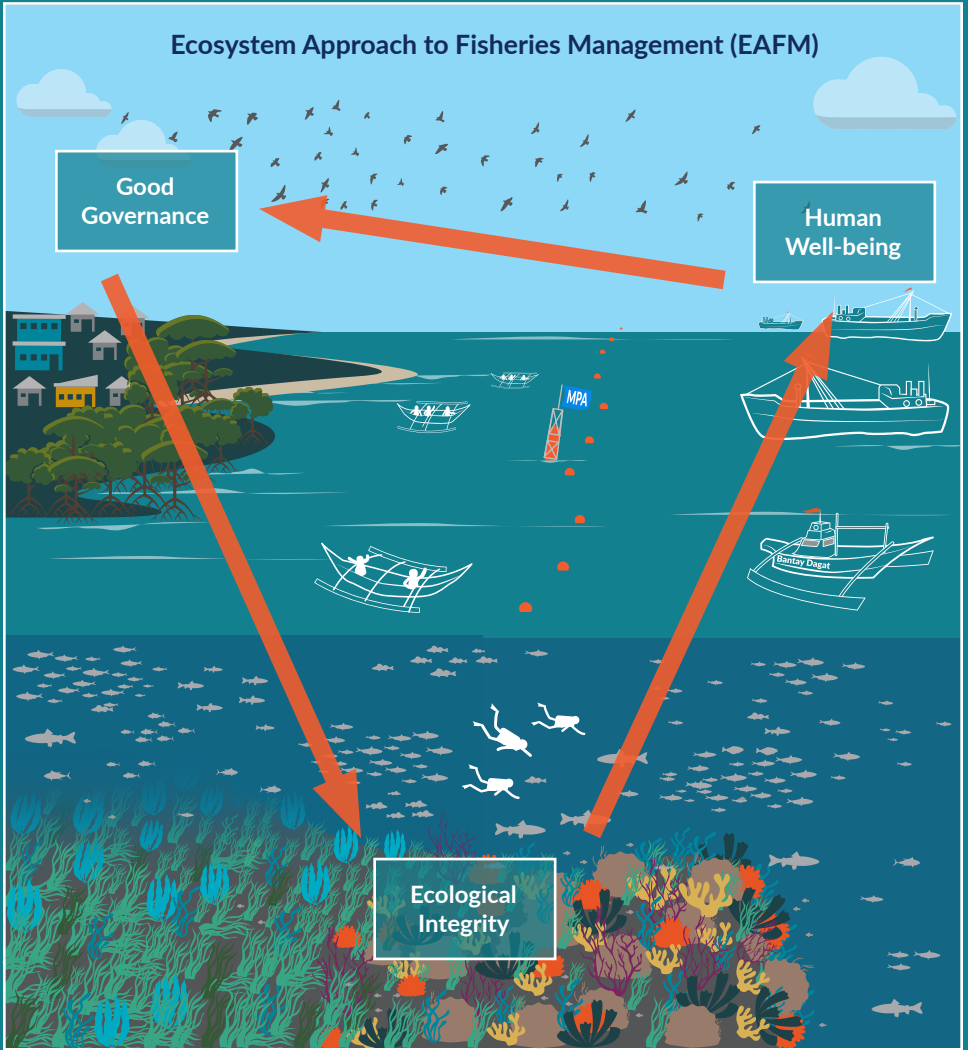
- Develop research agenda for FMA
- Create a database of scientific studies conducted in the FMA
- Share results and make available relevant data for use of FMA MB
- Mentor young scientists and researchers for succession and sustainability of the FMA SAG

The Management Board shall ensure that science-based fisheries management in the FMA is founded upon the advice of the SAG and guided by the FMA Plan

## Recommended scientific studies for fisheries management:

- Biology, population and ecology of key species
- Fisheries studies
- Oceanographic processes affecting fisheries
- Other threats such as pollution, sedimentation, coastal development & climate change
- Socioeconomics and governance

Fisheries management has evolved to go beyond protecting targeted species. The Ecosystems Approach to Fisheries Management (EAFM) promotes the Ridge-to-Reef approach which recognizes that aside from ecological considerations, sustainable fisheries must also prioritize the well-being of fisherfolks, industry traders, and communities.



**OCEANA** Protecting the World's Oceans



To know more about how we save the oceans and feed the world, visit our website [www.oceana.org](http://www.oceana.org) or email [philippines@oceana.org](mailto:philippines@oceana.org) on how you can help restore ocean abundance. Follow our social media accounts to connect with us.

